

THE MOTION CURTAIN

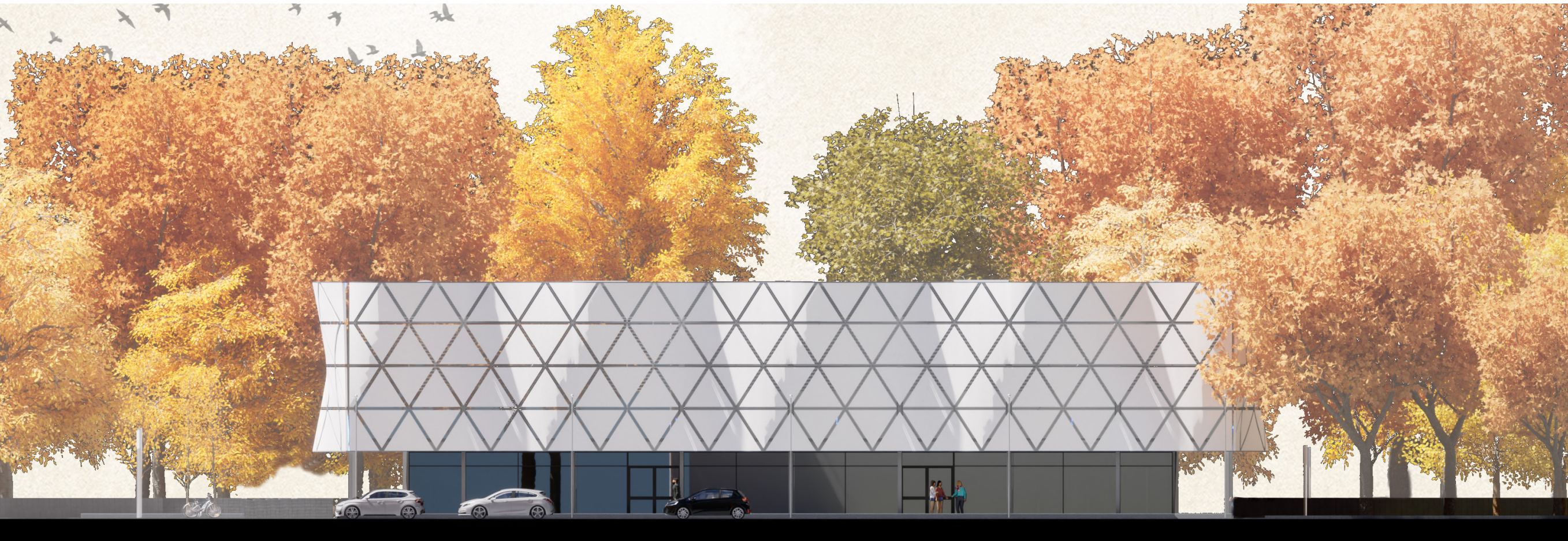
MEDIA ARCHITECTURE

Video Link: <https://youtu.be/vilwxnBH8R0>
Wetransfer: <https://we.tl/t-DYHIGM0nbs>



The „Motion Curtain” is an interactive media facade, added to the Blue Box in Bochum, Germany, which is located on the campus of the Bochum University of Applied Sciences. At the same time, this building represents the teaching location of the faculty of architecture. It is called Blue Box due to its clear cubic shape and blue facade elements before it was used as a teaching building.

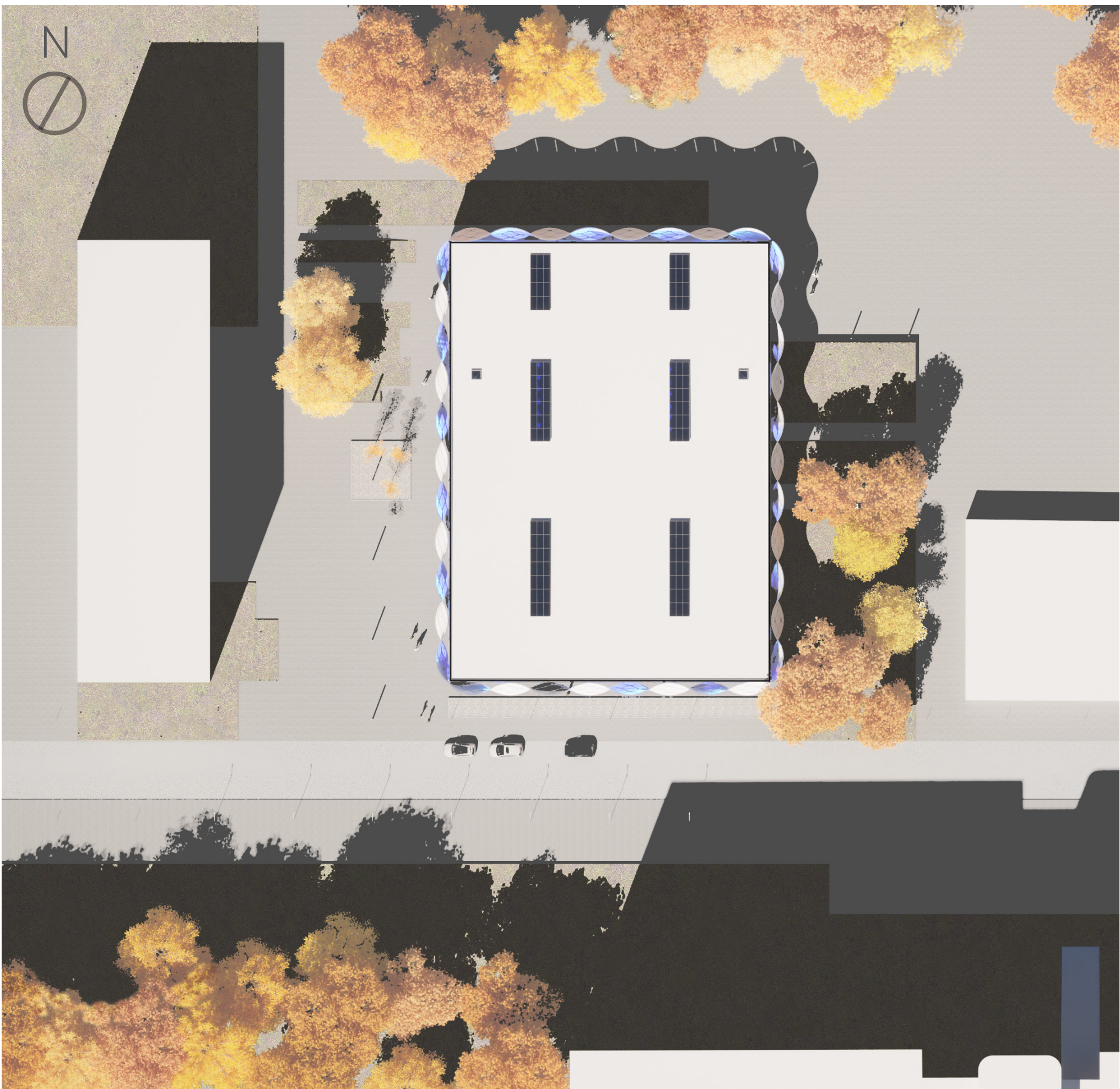
The structural design of the „Motion Curtain”, consisting of self-supporting triangular elements, is based on the Mero support system in the Blue Box. The added waveform of the facade represents the eponymous function of an interactive curtain, but also allows the first floor to be sufficiently illuminated by indirect light from above and below. The facade is connected to the external supports of the building, which allows a freely suspended construction.



South view 1:200

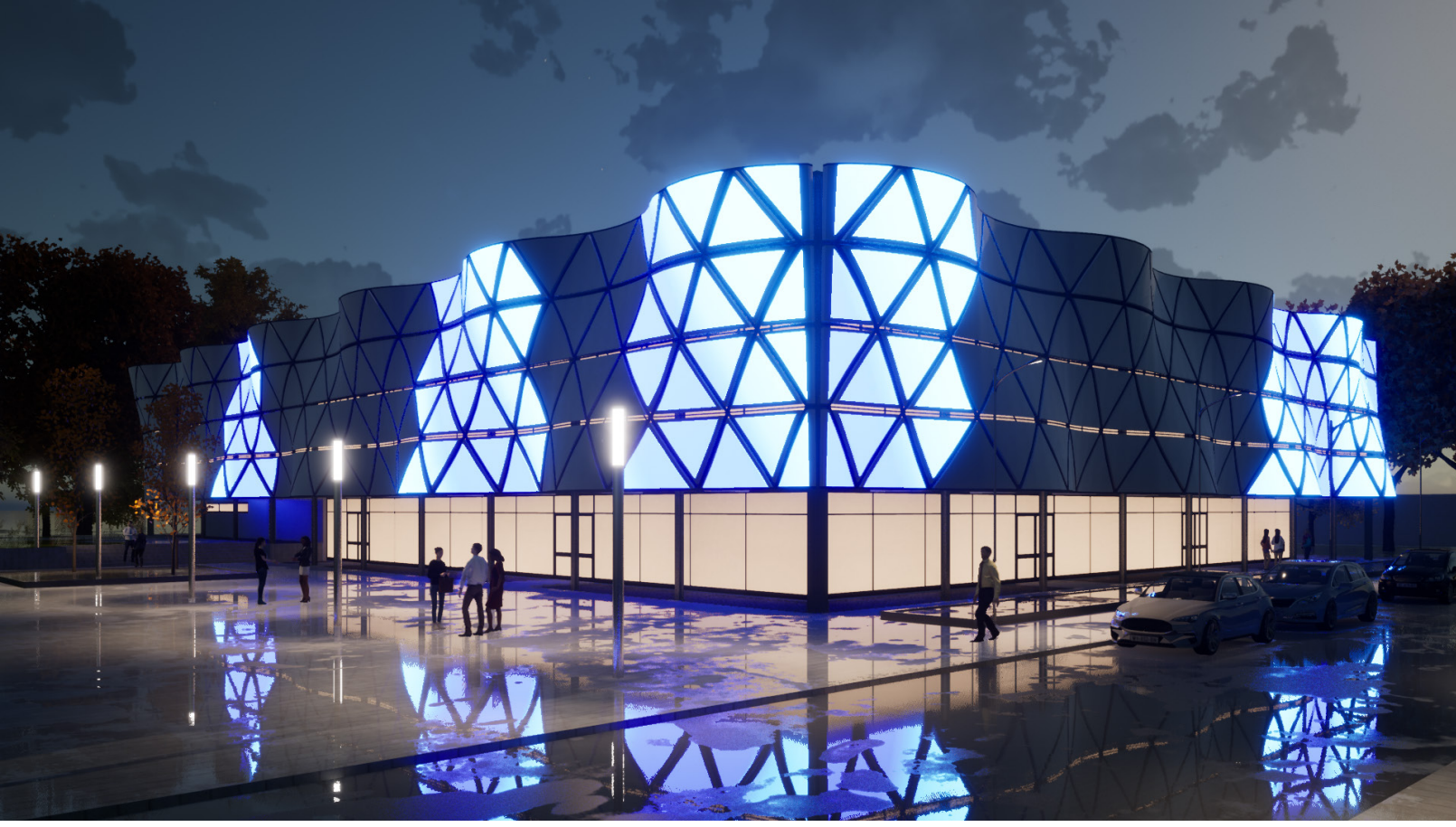


West view 1:200



Siteplan 1:500

The interaction with the visitor of the building takes place both through the reflection of his movement on the facade as well as the display of frequency of the number of visitors. This is achieved by light panels integrated into the facade, which react to movement and are switched on when triggered. The facade can be illuminated both during the day and at night. However, it makes sense to let the facade react to the time of day and thus show the pure construction during the day and switch on the interactive mode at night. Another possibility is to illuminate the facade in its entirety and, for example, to set color gradients. This leads to a brilliant light show, especially at night, which has its own dynamic depending on the time of day, the weather, the number of visitors and the number of interactions. The building becomes an independent and changing work of art through the influence of the visitor.



Interactive mode

